

# product data materials



services

equipment

machinery

drying



## Stix Ag

High performing seed film coating polymer Seedworx Stix Ag is aimed at the large volume agricultural sector.

### Applications

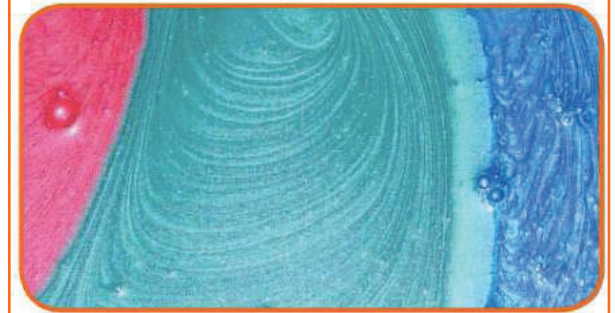
- Can be used for filmcoating, and when suitably diluted can be used for encrusting and pelleting or as a final coating.

### Target Use

- Seed treatments and Coating
- Large volume agricultural sector
- Unique formulation that can be used on a very wide range of different seed types

### Features

- Good even coverage
- Good binding capacity
- Compatible with Seedworx Color range
- Sparkle, quality finish
- High opacity
- Concentrated formulation
- 40 CFR Approved



### Benefits

- Keep treatments on seed to maximize seed treatment performance and optimize yields
- Wide range of adaptability for seed species
- WOW factor appearance
- No need for additional messy powder additives
- Minimized use rate
- Easy cleaning of equipment after use
- Meets EPA approved requirements

Use	Coating Type			Properties					
	Film	Encrust	Pellet	Binding Capacity	Opacity	Finish	Flow Rating	Dust Control	Color(s)
<b>Finishing</b>	<b>Yes</b>	<b>Yes*</b>	<b>Yes*</b>	<b>Low-Med</b>	<b>Med-High</b>	<b>Sparkle, Bright</b>	<b>-</b>	<b>Low</b>	<b>R,G,B,Y,O,V</b>

\* When suitably diluted or as a final coating



# Stix Ag



## Physical Properties

<b>Viscosity:</b>	Pourable liquid
<b>Solubility:</b>	Miscible with water
<b>pH (measured at 20°C)</b>	6.5-7.5
<b>Color:</b>	White, clear on drying

Seedworx Stix Ag is a liquid, water-based co-polymer.

## Storage and Packing

We recommend storage in a clean, dry area at ambient temperature, above 41° F and below 86° F (5°C - 30°C).

Material should be stored in original containers and kept closed when not in use.

Shelf life of the product kept under these conditions is expected to be 6-12 months.

## Application Guide

Seedworx Stix Ag should be stirred before use as some settling may occur during transport and storage. For most applications Seedworx Stix Ag should be diluted with water before use. Typical slurry application rates are shown in the table below.

Product	Seedworx Stix Ag	Water	Seedworx Color
<b>Seed Treatment</b>	1-3 oz/cwt	As needed to make up slurry	1-2 oz/cwt
<b>Pelleting / coating</b>	50 parts	50 parts	-
<b>Coloring</b>	40-50 parts	40-50 parts	5-15 parts
<b>Filmcoating</b>	40-50 parts	40-50 parts	5-15 parts

This table is purely for guidance only and any mixes should be tested before any large scale application. Once a mix has been prepared it should be used on the same day.

Storage of mixtures is not recommended.

Seedworx Stix Ag can be used in combination with the Seedworx Finishing Powder where over-wetting can occur or where a shiny finish is desired. Seedworx Stix Ag can also be used with the range of Seedworx Colors (Red, Green, Blue, Violet).

## Other Information

The information given is believed to be accurate and is given in good faith but no representation or warranty as to its completeness or accuracy is made.

*The information given is believed to be accurate and is given in good faith but no representation or warranty as to its completeness or accuracy is made.*